



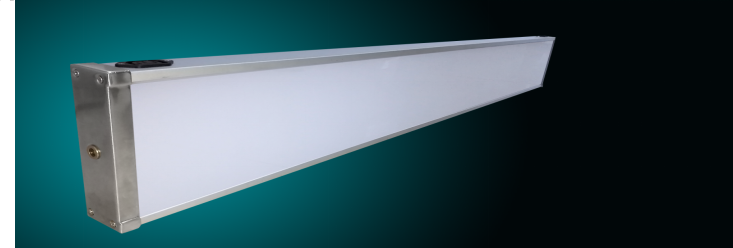
2024

LED WORKSTATION LIGHT SPECIFICATION SHEET

S.H. Widen Photodiode Tech Corp.,Ltd

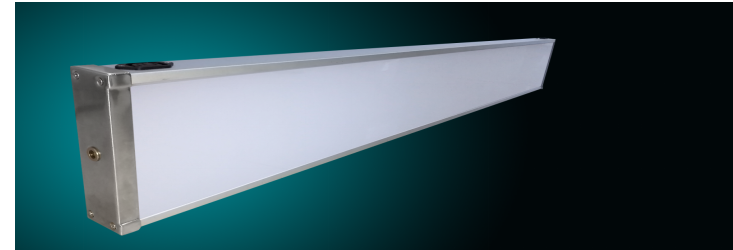
◆ LED workstation light

- Eye protection station lamp is a kind of lighting equipment that can improve the comfort of light, protect the eyes and prevent myopia, the function of preventing stroboflicker, can reduce the stimulation of light flashing to the eyes, reduce the fatigue of the eyes.
- . Outline style and dimensions of each station: L1200 * W180 * H50mm
- Power: 40W
- Color temperature: 4000K .
- Color rendering index: Ra> 80
- Optical flux: 150 Lm/W.
- Input voltage: AC220-240V /50Hz
- Using PC panel lampshade, the light is soft and no strobe, can prevent the instantaneous dazzle caused by missed detection and detection is not careful, good light conditions help to reduce the visual fatigue of the workshop staff.



◆ Eye care station lamp

- Light body material: aluminum alloy.
- Power factor:> 95
- Protection level: IP40
- Life time: 50,000 h
- Working environment: -30°C ~ + 55°C
- Year of application: 2010-2023
- Product application: China, Poland, Volkswagen, Geely BYD Benz
BMW School



- 护眼工位灯，是一种能够提高光线舒适度、保护眼睛、预防近视的照明设备，防频闪晃眼的功能，能够减少灯光闪烁对眼睛的刺激，减轻眼睛的疲劳感。
- . 每个工位外形样式和尺寸： L1200*W180*H50mm
- 功率：40W
- 色温：4000K.
- 显色指数：Ra > 80
- 光通量：150Lm/W
- 输入电压：AC220-240V /50Hz
- 采用PC面板灯罩，发光柔和无频闪，可防止瞬间炫目造成的漏检和检测不细致，良好的光线条件有助于减少车间员工们的视觉疲劳。
- 灯体材质：铝合金。
- 功率因数：>95
- 防护等级：IP40
- 寿命：≥50000h
- 工作环境：-30℃~+55℃
- 应用年份：2010-2023
- 产品应用涉及地：中国 英国 波兰 大众 通用 吉利 比亚迪 奔驰 宝马

